

DSC Load Cell



- Maximum capacity (E_{max}) (klbs):
20,25,40,50,60,75,100,125
- Stainless steel available
- Applications: Truck/rail scales; Silo/hopper/tank weighing;
Fork-lift scales
- Free of horizontal movement; Insensitive to side load;
Electroless nickel plated alloy tool steel.

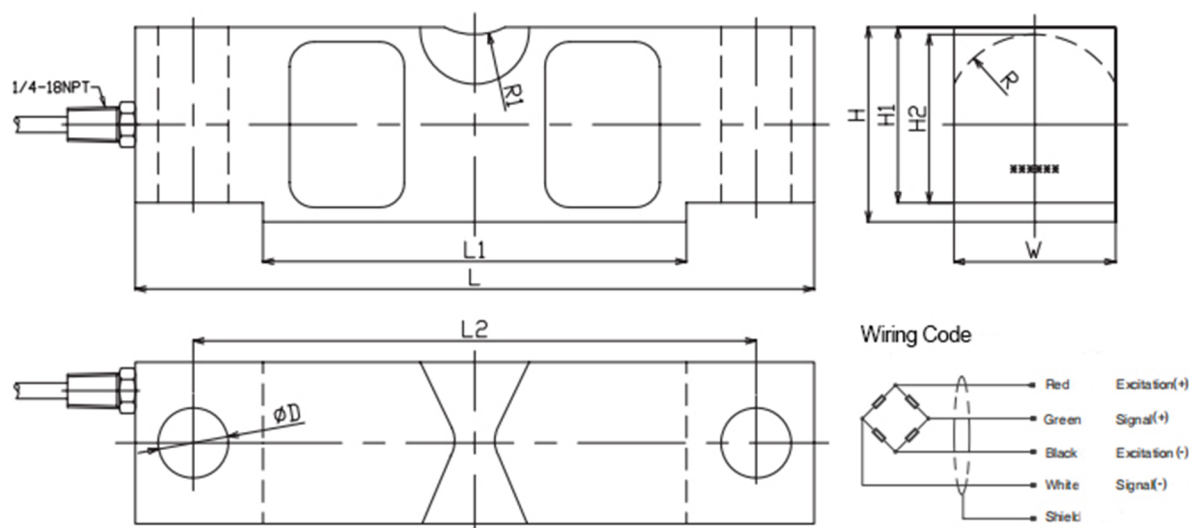
Specifications

Rated capacity-R.C. (E _{max})	klb	20,25,40,50,60,75,100,125
Rated output-R.O.	mV/V	3 ± 0.0075
Zero Balance	%R.O.	±1
Comprehensive Error	%R.O.	± 0.025
Non-linearity	% R.O.	± 0.025
Hysteresis	% R.O.	± 0.025
Creep after 30 minutes	%R.O	± 0.03
Temperature effect on min. dead load output	% R.O. /10°C	± 0.02
Temperature effect on sensitivity	% R.O. /10°C	± 0.02
Compensated temperature range	°C	-10...+40
Operating temperature range	°C	-40...+80
Excitation voltage	VDC	5...15
Input impedance	Ω	760±10
Output impedance	Ω	750±5
Insulation resistance	MΩ	≥5000 (50VDC)
Safe overload	% E _{max}	150
Ultimate overload	% E _{max}	300
Material		Nickel plated alloy Steel
Degree of protection		IP66
Cable length	m	8m/ 13m

Description

- In some application cases such as hopper and tank weighing, the DSC double-ended fixed installation method provides good restraint, which can save the displacement restraint rod.
- Shear beam design provides excellent measurement performance for high capacity loads.
- The DSC is designed for multiple load cell applications such as medium and high capacity tank, silo and hopper weighing applications.
- The DSC is made of nickel-plated alloy tool steel with an IP65 degree of protection. Stainless steel fully welded and sealed version is available.
- It is ideal for truck scale, rail scales, container weighing and batching systems.

Dimension (mm)



Capacity(klbs)		L	L1	L2	W	H	H1	H2	D	R	R1
20/25	mm	169.9	126.7	165.1	42.9	49.3	43.2	41.4	17.3	22.9	19.1
	inch	7.75	4.99	6.50	1.69	1.94	1.70	1.63	0.68	0.90	0.75
40	mm	260.4	162.3	215.9	49.3	62.0	53.3	50.8	20.6	28.5	25.4
	inch	10.25	6.39	8.50	1.94	2.44	2.10	2.00	0.81	1.12	1.00
50/60/75	mm	260.4	162.4	215.9	62.0	74.7	67.3	64.5	26.9	34.8	25.4
	inch	10.25	6.39	8.50	2.44	2.94	2.65	2.54	1.06	1.37	1.00
100/125	mm	387.4	228.4	323.9	73.7	98.0	87.1	83.8	41.2	45.7	38.1
	inch	15.25	8.99	12.75	2.90	3.96	3.43	3.30	1.62	1.80	1.50