

GW

Weighing Module

- Maximum capacity (E_{max}) (t):
10, 20, 30, 40, 50
- Be suitable for tanks, silo, and others weighing control.



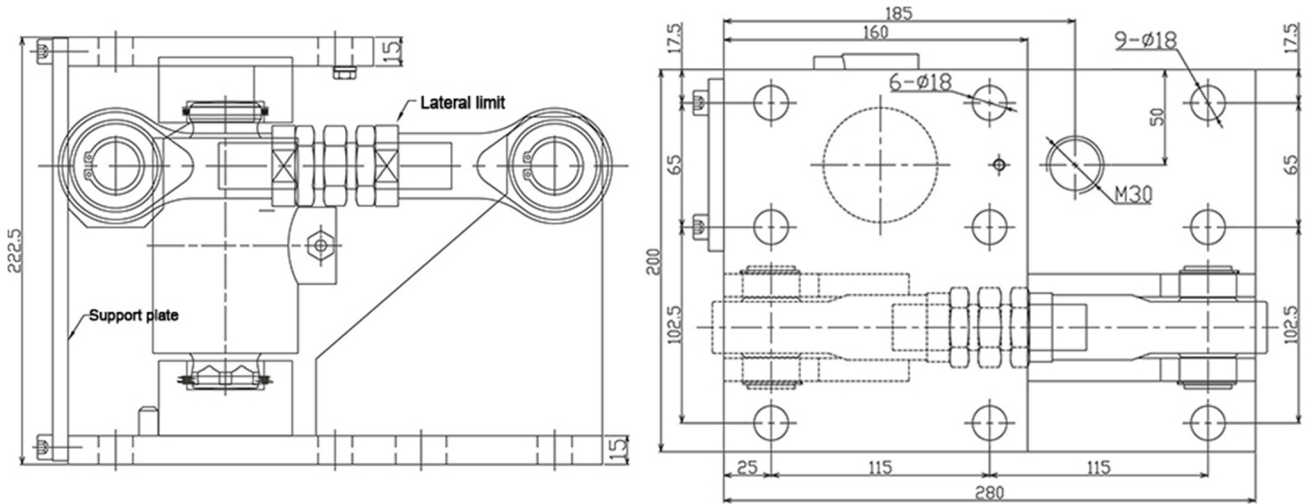
Features

- Alloy steel or Stainless steel welding sealing load cell suitable for the humid and corrosion environment.
- Stay bolt, prevent the equipment upsetting.
- Support the bolt, prevent the equipment to avoid upsetting.
- Alloy steel, nickel plating; Stainless steel material is available.
- Simple to install, express setup.
- Reducing load cell damage and plant down-time.
- Suitable for tanks, silo, and others weighing control.

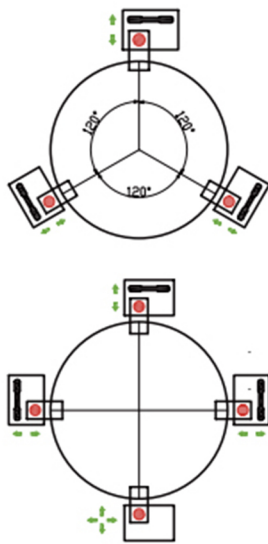
Specifications

Load Cell		LCC430
Rated Load	t	10, 20, 30, 40, 50
Rated Output	mV/V	2±0.0050
Safe overload	%R.C.	150
Ultimate overload	%R.C.	300
Protection class		IP68

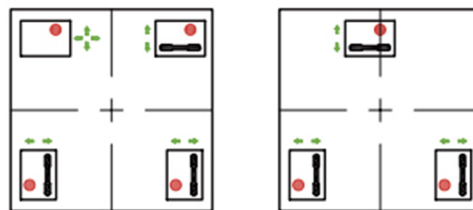
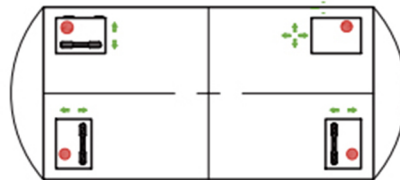
Dimensions(in mm)






Installation layout



Tangential layout



Rectangular or square layout

-  Lateral limit
-  Center of force
-  Movement direction

Four modules are installed, one of which should have its lateral limit removed.