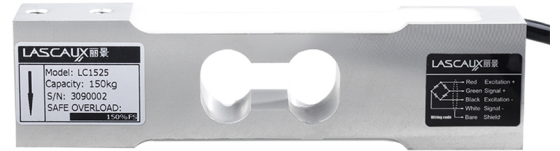


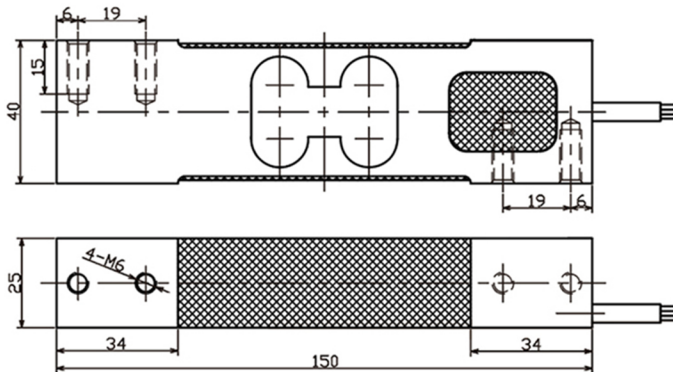
LC1525 Load Cell

Single Point Load Cell

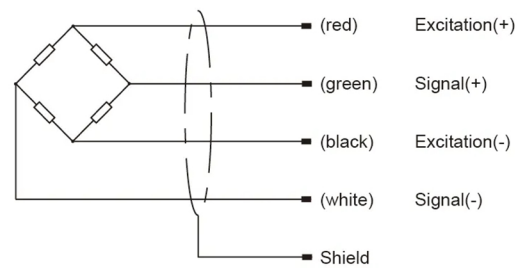
- Maximum capacity (E_{max}) (kg):
7.5, 15, 20, 30, 50, 100, 150
- Be suitable for the fields of Electronic Scales, Counting Scales, Packaging Scales, Price-computing instrument, Industries of Foods, Pharmaceuticals, which has huge important on weighing and control.



Dimensions(mm)



Wiring code



Specifications

Rated Load	kg	7.5, 15, 20, 30, 50, 100, 150
Rated Output	mV/V	2±0.2
Zero Balance	%R.O.	±1
Comprehensive Error	%R.O.	±0.02
Recommended excitation voltage	VDC	5-12 / 15(max)
Input impedance	Ω	410±10
Output impedance	Ω	350±5
Insulation resistance	MΩ	≥5000 (50VDC)
Safe overload	%R.C.	150
Ultimate overload	%R.C.	200
Material		Aluminum
Degree of protection		IP65
The length of the cable	m	2
Maximum platform size	mm	400•400
Tightening torque	N•m	7.5kg-30kg: 7N•m 50kg-150kg: 10N•m