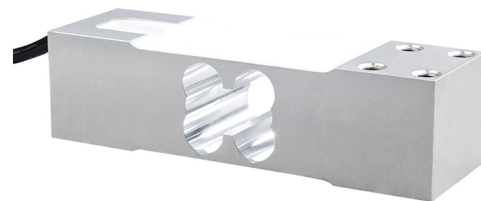


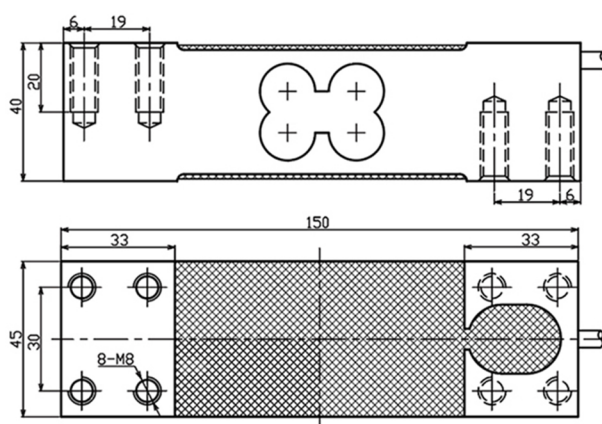
# LC1545 Load Cell

## Single Point Load Cell

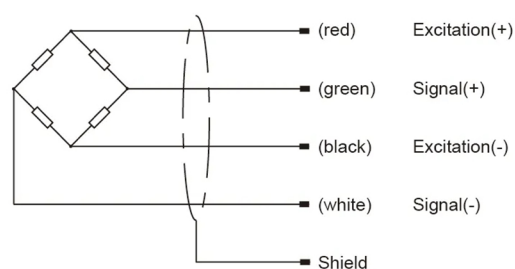
- Maximum capacity (E<sub>max</sub>) (kg):  
60, 100, 150, 200, 300
- Be suitable for the fields of Electronic Scales, Counting Scales, Packaging Scales, Price-computing instrument, Industries of Foods, Pharmaceuticals, which has huge important on weighing and control.



### Dimensions(mm)



### Wiring code



### Specifications

Rated Load	kg	60, 100, 150, 200, 300
Rated Output	mV/V	2±0.2
Zero Balance	%R.O.	±2
Comprehensive Error	%R.O.	±0.02
Recommended excitation voltage	VDC	5-12 /15(max)
Input impedance	Ω	410±10
Output impedance	Ω	350±5
Insulation resistance	MΩ	≥5000 (50VDC)
Safe overload	%R.C.	150
Ultimate overload	%R.C.	200
Material		Aluminum
Degree of protection		IP65
The length of the cable	m	2
Maximum platform size	mm	400•500
Tightening torque	N•m	20