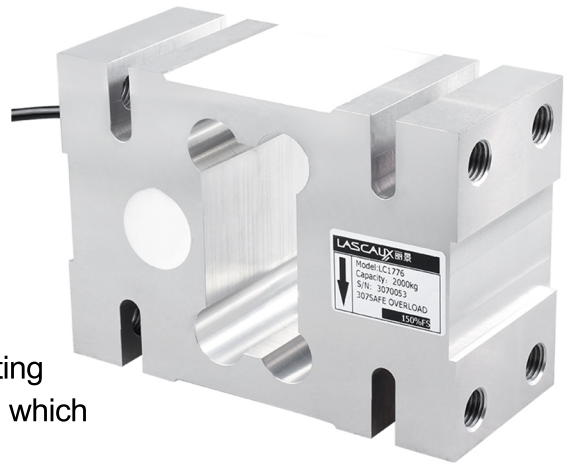


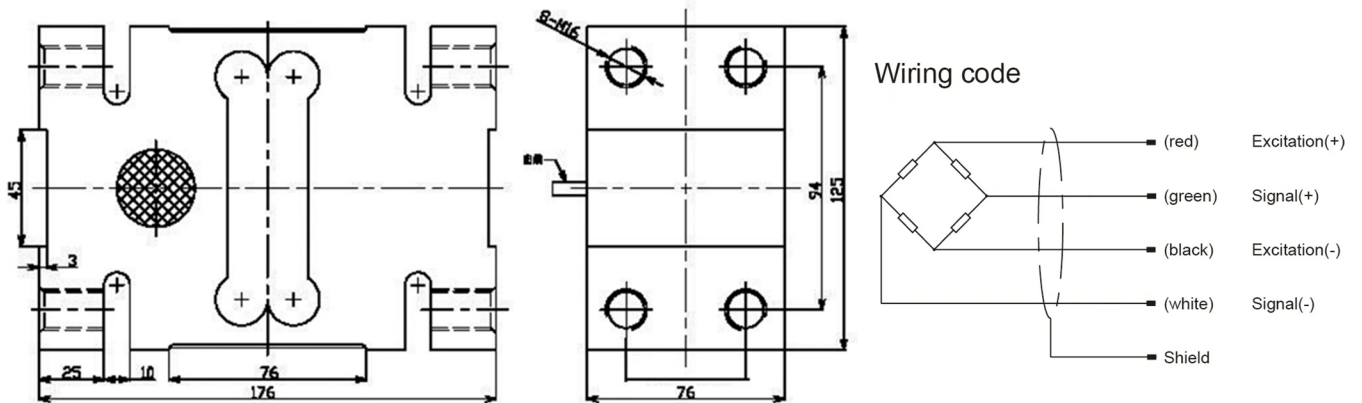
# LC1776 Load Cell

## Single Point Load Cell



- Maximum capacity (E<sub>max</sub>) (t): 0.75, 1, 2
- Be suitable for the fields of Electronic Scales, Counting Scales, Packaging Scales, Price-computing instrument, Industries of Foods, Pharmaceuticals, which has huge important on weighing and control.

### Dimensions(mm)



### Specifications

Rated Load	t	0.75, 1, 2
Rated Output	mV/V	2.0±0.2
Zero Balance	%R.O.	±1
Comprehensive Error	%R.O.	±0.02
Recommend edexcitation voltage	VDC	5-12 /15(max)
Input impedance	Ω	410±10
Output impedance	Ω	350±5
Insulation resistance	MΩ	≥5000 (50VDC)
Safe overload	%R.C.	150
Ultimate overload	%R.C.	200
Material		Aluminum
Degree of protection		IP65
The length of the cable	m	3
Maximum platform size	mm	1200*1200
Tightening torque	N·m	165