

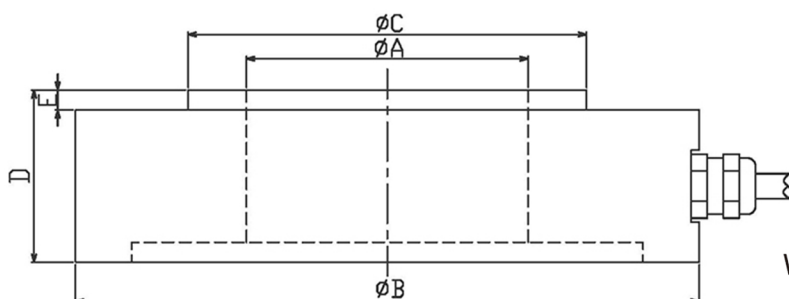
LCD820 Load Cell

Low Profile Disk Load Cell

- Maximum capacity (E_{max}) (t):
1, 2, 5, 10, 20, 30, 50
- Be suitable for a wide range of applications including testing or weighing systems.

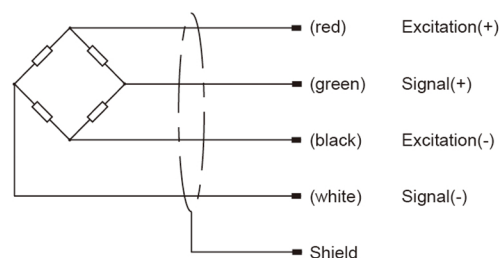


Dimensions(mm)



| 量程 Capacity(t) | ØA | ØB | ØC | D | E |
|----------------|----|-----|----|----|---|
| 1, 2, 5 | 12 | 68 | 22 | 20 | 3 |
| 10 | 50 | 148 | 80 | 37 | 5 |
| 20, 30, 50 | 70 | 155 | 98 | 43 | 6 |

Wiring code



Specifications

| | | |
|--------------------------------|-------|----------------------------|
| Rated Load | t | 1, 2, 3, 5, 10, 20, 30, 50 |
| Rated Output | mV/V | 1.2-1.5 |
| Zero Balance | %R.O. | ±1.0 |
| Comprehensive Error | %R.O. | ±0.5 |
| Creep after 30 minutes | %R.O. | ±0.1 |
| Recommended excitation voltage | VDC | 5-12 /15(max) |
| Insulation resistance | MΩ | ≥5000 (50VDC) |
| Safe overload | %R.C. | 150 |
| Ultimate overload | %R.C. | 300 |
| Material | | Alloy Steel |
| Degree of protection | | IP66 |