

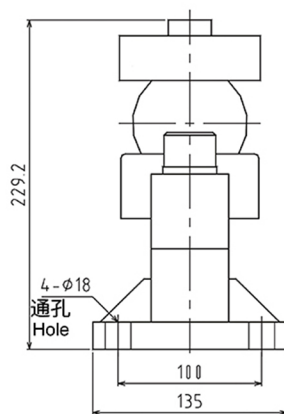
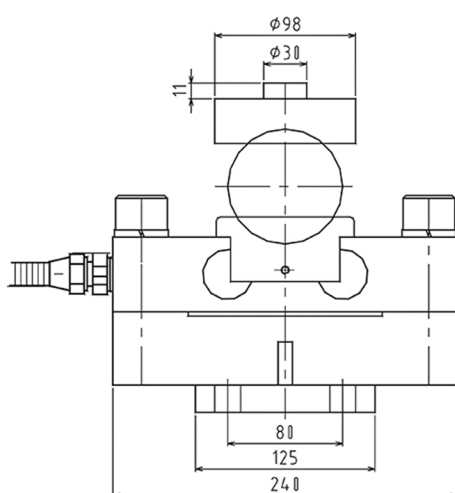
# QS1 Load Cell

## Double Ended Beam Load Cell

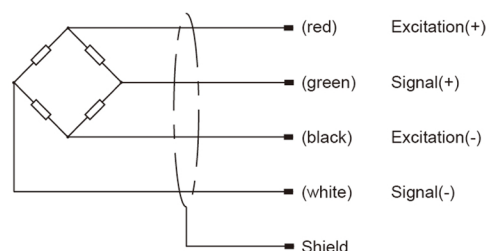
- Maximum capacity (E<sub>max</sub>) (t):  
10, 15, 20, 25, 30
- Be suitable for the fields of Truck scales, Rail scales, Hopper scales and other special scales.



### Dimensions(mm)



### Wiring code



### Specifications

Rated Load	t	10, 15, 20, 25, 30
Rated Output	mV/V	2.0±0.005
Zero Balance	%R.O.	±1
Comprehensive Error	%R.O.	±0.03
Creep after 30 minutes	%R.O.	±0.03
Recommended excitation voltage	VDC	10/15(max)
Input impedance	Ω	770±10
Output impedance	Ω	700±5
Insulation resistance	MΩ	≥5000 (50VDC)
Safe overload	%R.C.	150
Ultimate overload	%R.C.	300
Material		Alloy Steel
Degree of protection		IP67
The length of the cable	m	13