

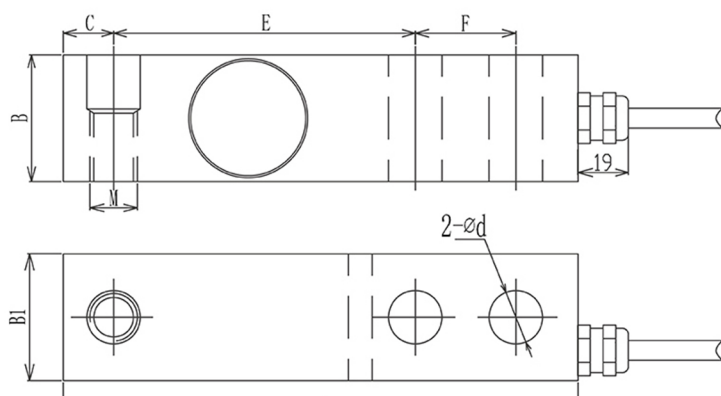
SQB-SS Load Cell

Single Ended Beam Load Cell

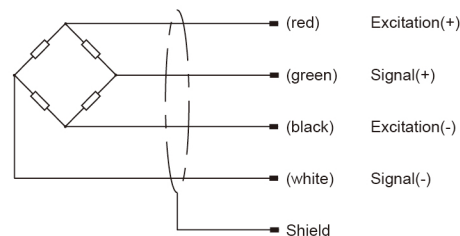
- Maximum capacity (E_{max}) (t):
0.5, 1, 2, 3, 5
- Be suitable for the fields of Ground Scales, Platform Scales, Belt Scales, Industries of Foods, Pharmaceuticals, which has huge important on weighing and control.



Dimensions(mm)



Wiring code



CAPACITY 量程 (t)	A	B	C	D	E	F	Ød	M
0.5,1,2	130	32	25	12.7	76.2	25.4	13.5	M12×1.75
3,5	172	38	38	19.1	95.3	38.1	19.8	M20×1.5

Specifications

Rated Load	t	0.5, 1, 2, 3, 5
Rated Output	mV/V	2.0±0.005
Zero Balance	%R.O.	±1
Comprehensive Error	%R.O.	±0.02
Creep after 30 minutes	%R.O.	±0.02
Recommended excitation voltage	VDC	5-12 /15(max)
Input impedance	Ω	380±10
Output impedance	Ω	350±5
Insulation resistance	MΩ	≥5000 (50VDC)
Safe overload	%R.C.	150
Ultimate overload	%R.C.	300
Material		Stainless Steel
Degree of protection		IP68
The length of the cable	m	0.5t-2t: 3m 3t-5t: 5m
Tightening torque	N•m	0.5t-2t: 98N•m 3t-5t: 275N•m