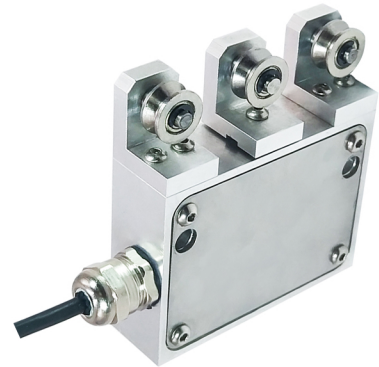


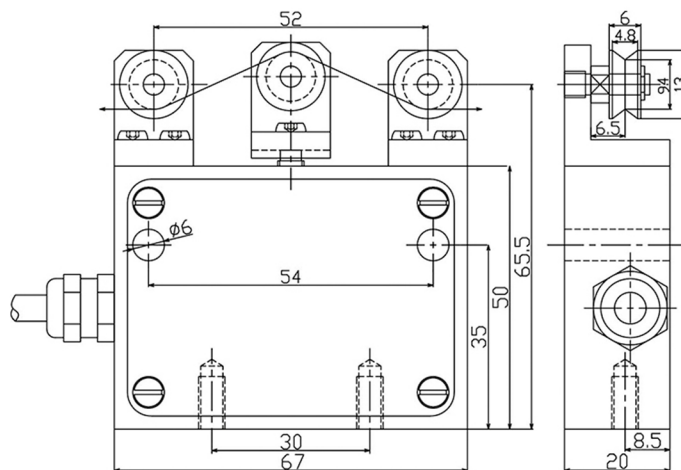
# TS

## Tension Sensor

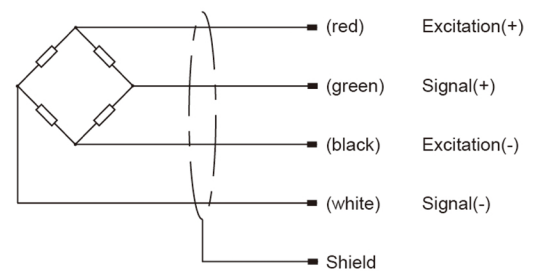
- Maximum capacity (E<sub>max</sub>)(kg):  
0.5, 1, 2, 3
- Be suitable for on-line tension measurement, such as rope, fiber, electric wires, metal wire. and other similar products.



### Dimensions (in mm)



### Wiring code



### Specifications

Rated Load	kg	0.5, 1, 2, 3
Rated Output	mV/V	1
Zero Balance	%R.O.	±1
Comprehensive Error	%R.O.	±0.3
Nonlinearity	%R.O.	±0.3
Repeatability Error	%R.O.	±0.1
Recommended excitation voltage	VDC	5-12 /15(max)
Input / Output impedance	Ω	350±5 / 350±3
Insulation resistance	MΩ	≥5000 (50VDC)
Safe overload / Ultimate overload	%R.C.	150 / 300
Material		Aluminum
Degree of protection		IP65
The length of the cable	m	3